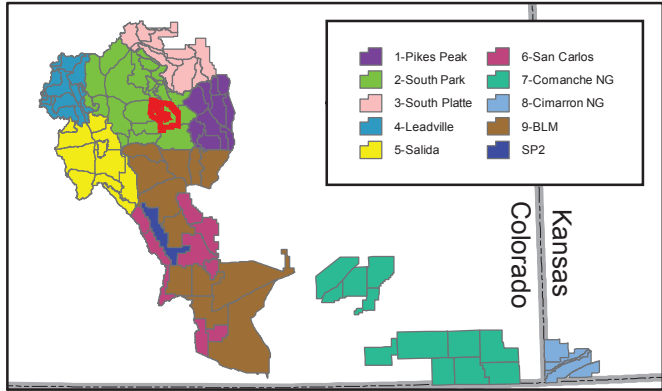


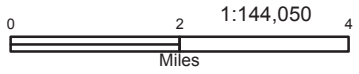
USDA Forest Service	Indian Reservation	National Park Service	State
Bureau of Land Management	Military Reservation	Other Federal	State, County, City, Areas
Bureau of Reclamation	National Grasslands	Private	Bankhead-Jones Land Use Lands
			US Fish and Wildlife Service



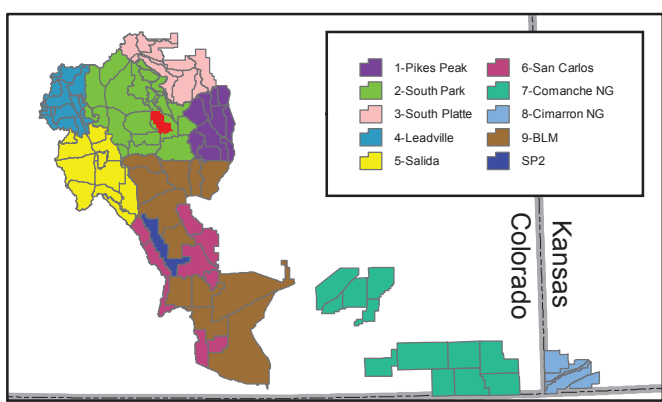
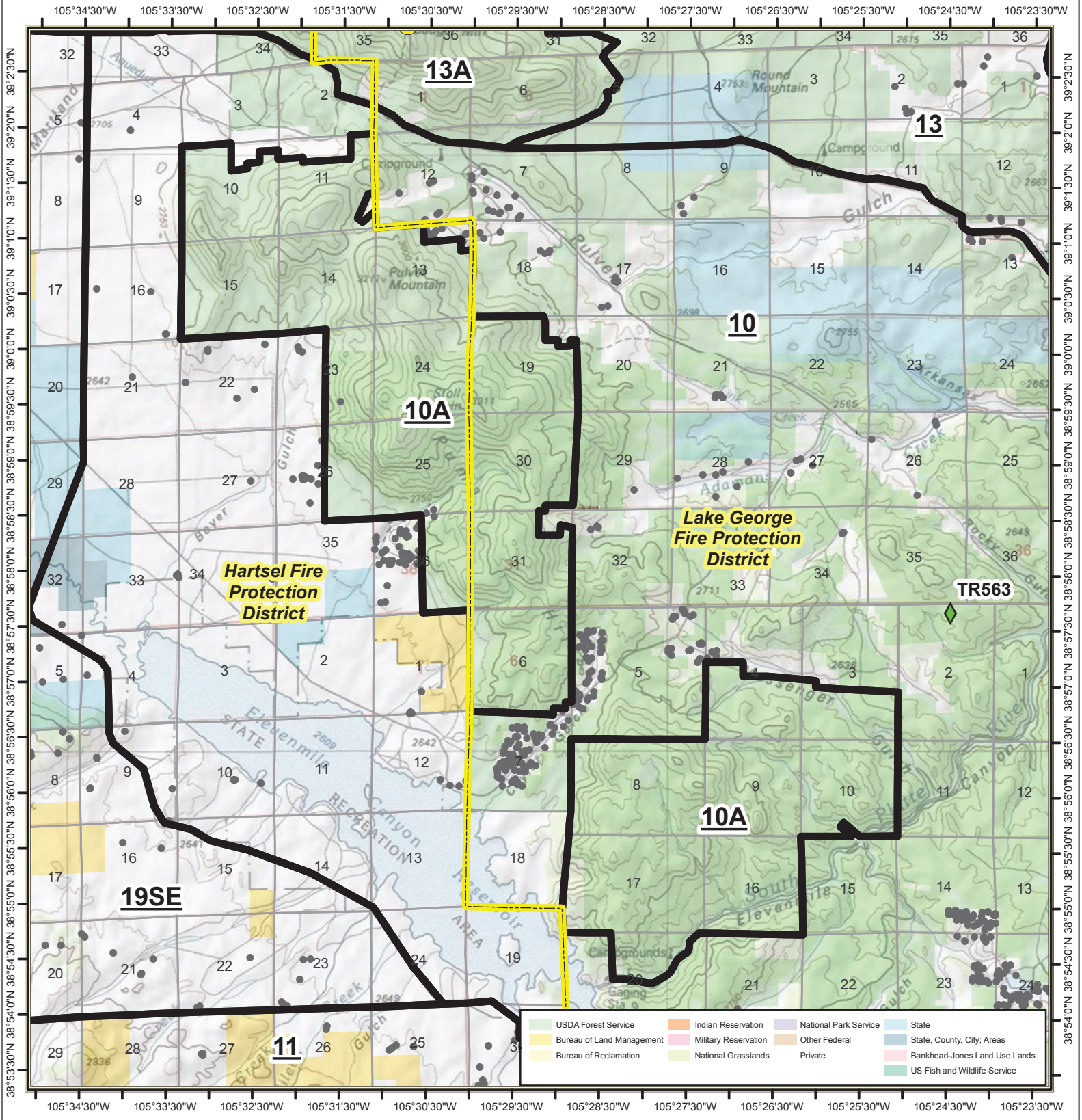
10-Lake George

Page 11 of 101

- Structures
- Base-DIRECT
- Repeater
- Response Areas
- ◆ RAWs Stations
- Fire Protection Districts



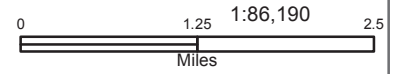
Date: 7/8/2019



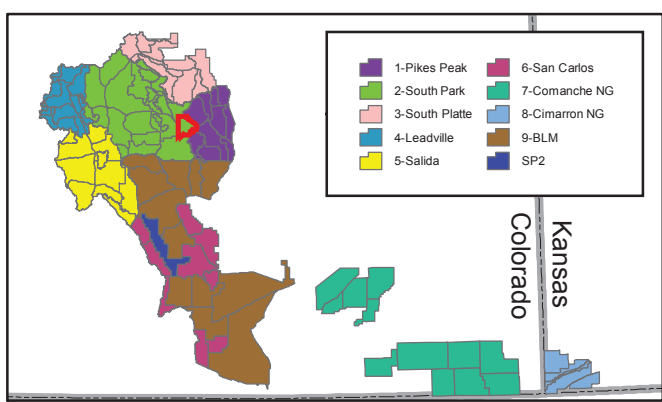
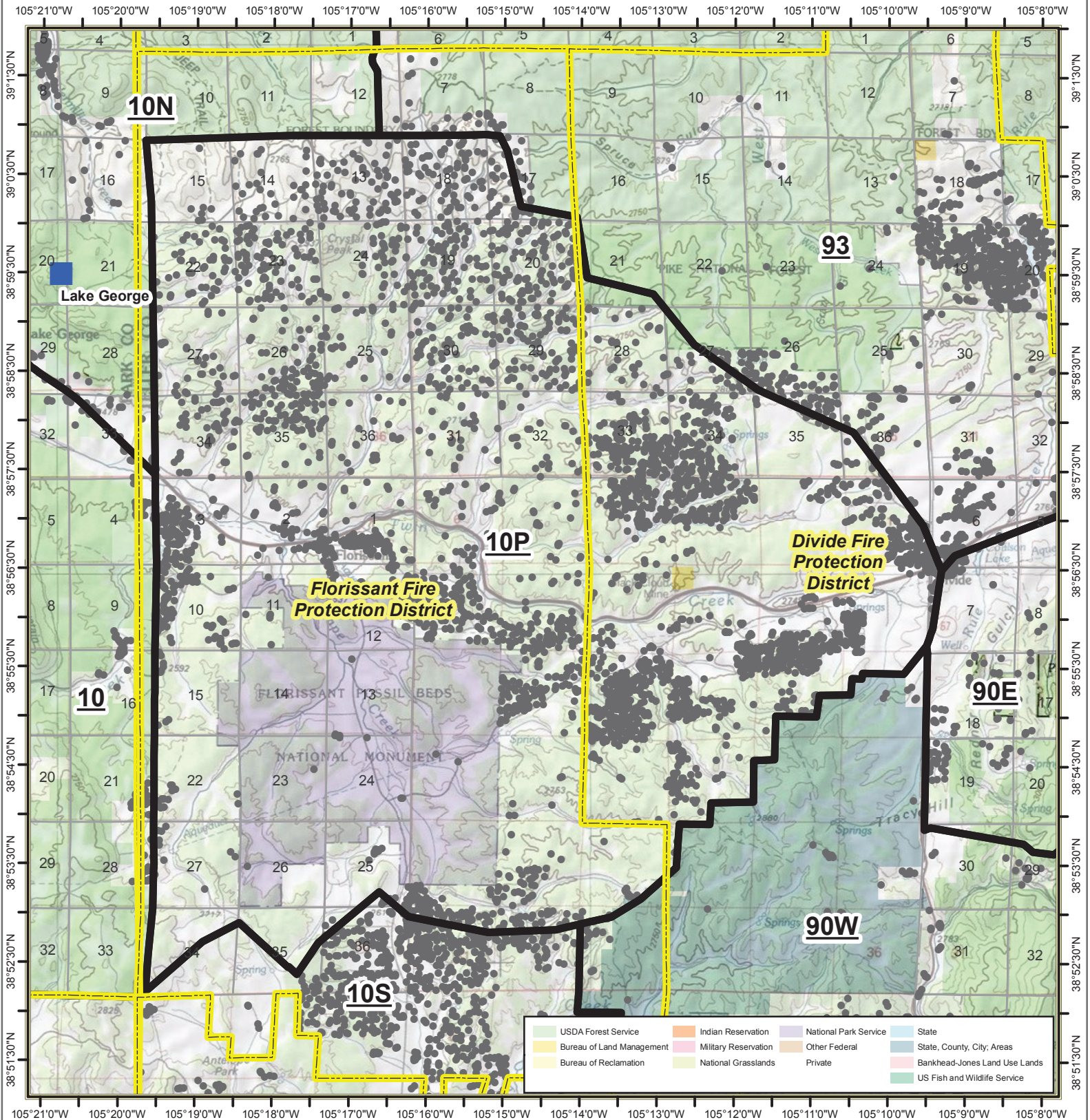
10A-Stoll Mountain

Page 12 of 101

- Structures
- Base-DIRECT
- Repeater
- Response Areas
- ◆ RAWS Stations
- Fire Protection Districts



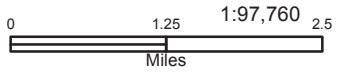
Date: 7/8/2019



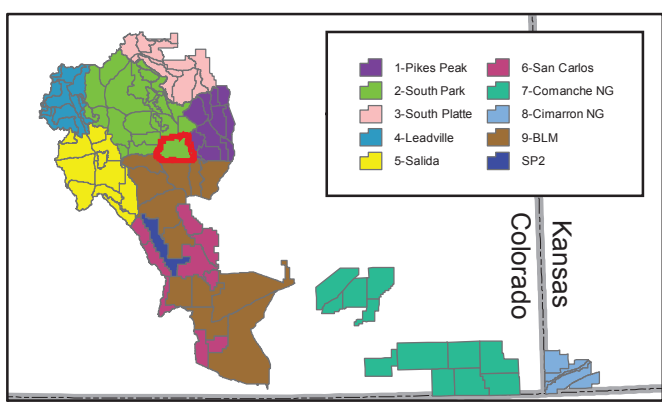
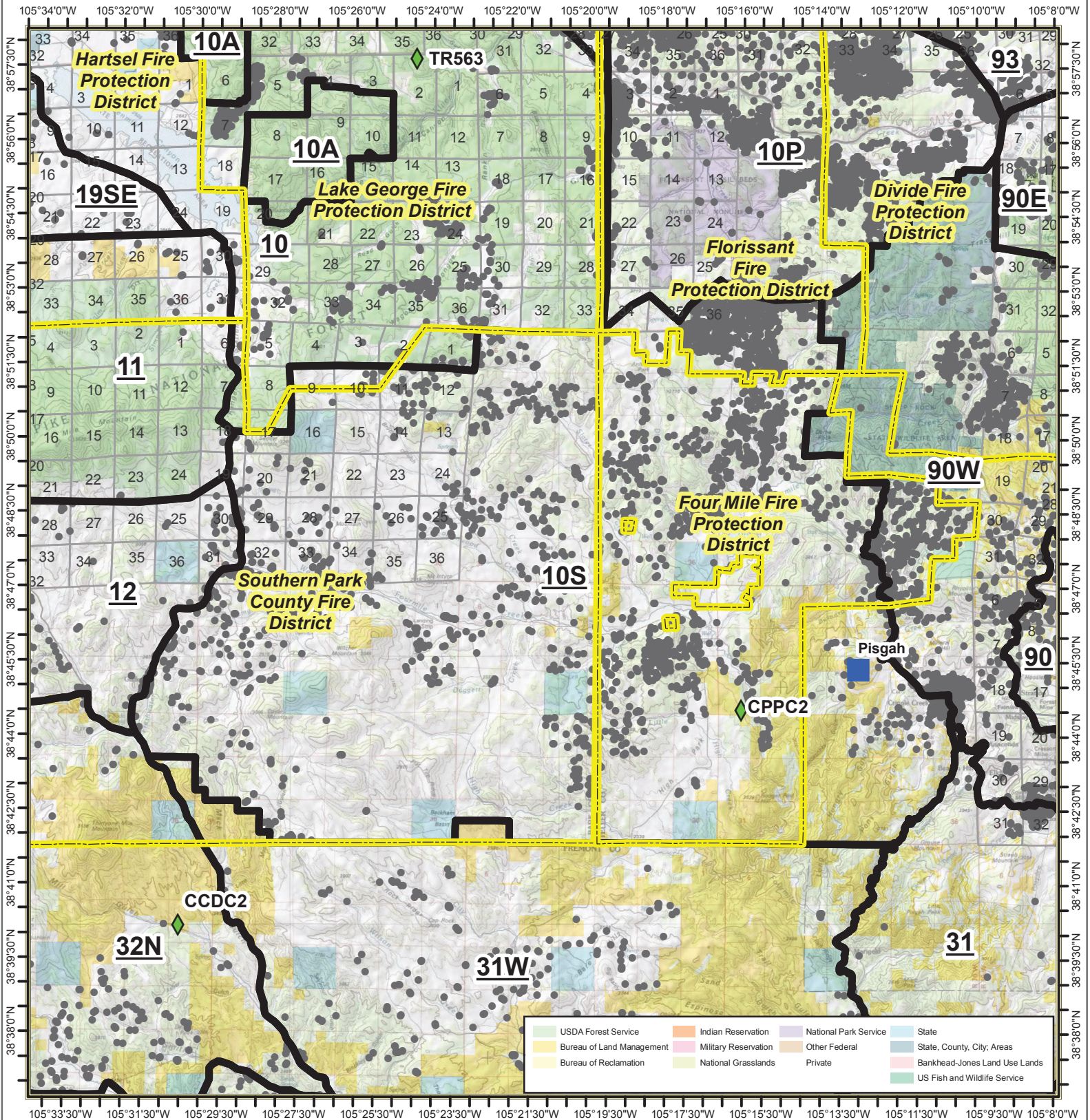
10P-Florissant Fossil Beds NPS

Page 14 of 101

- Structures
- Base-DIRECT
- Repeater
- Response Areas
- ◆ RAWS Stations
- Fire Protection Districts



Date: 7/8/2019



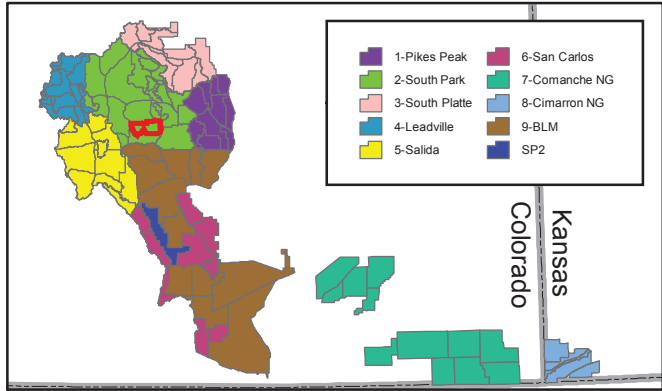
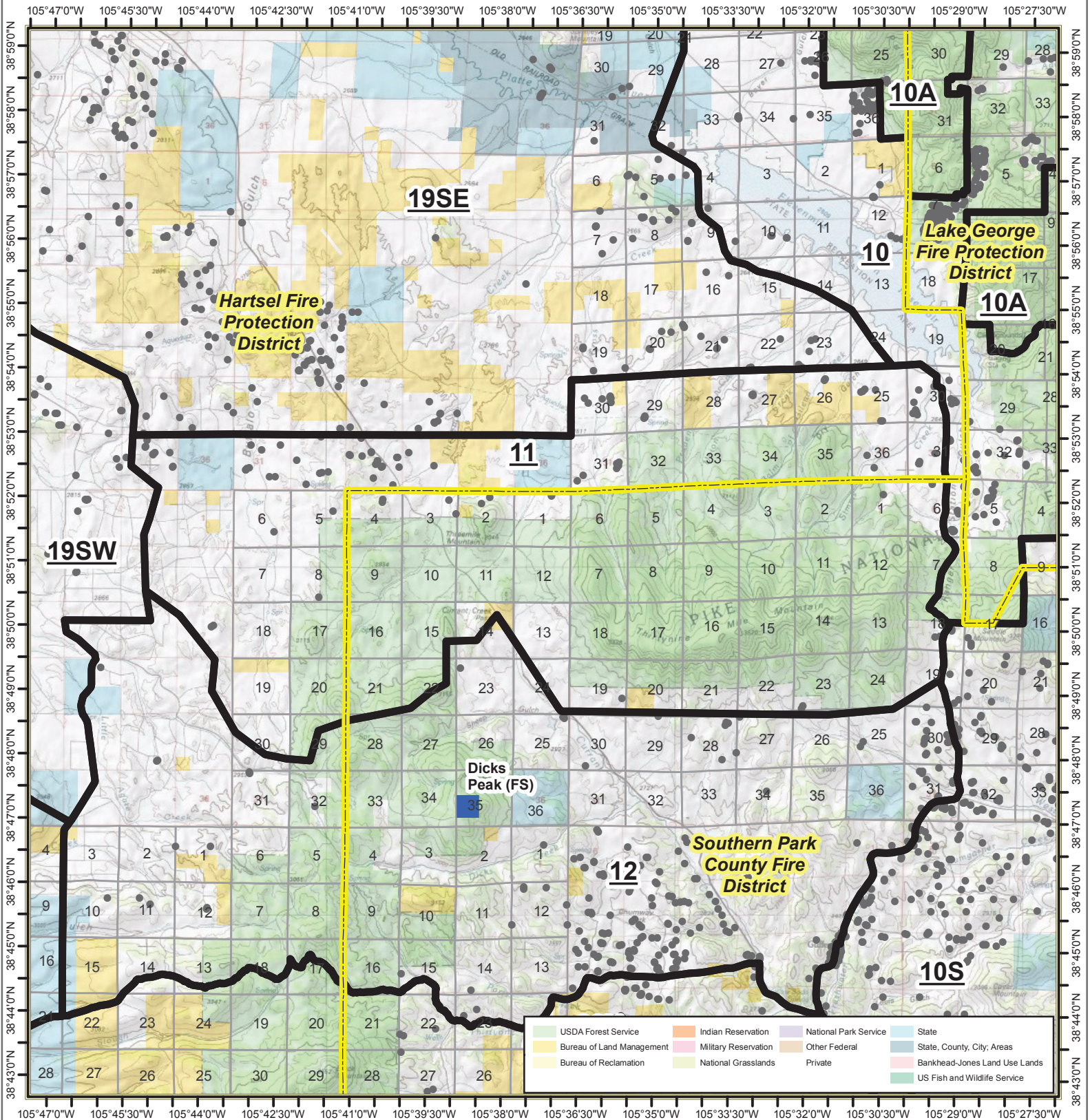
10S-Fourmile

Page 15 of 101

- Structures
- Base-DIRECT
- Repeater
- Response Areas
- ◆ RAWS Stations
- Fire Protection Districts



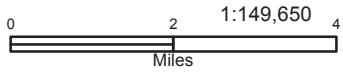
Date: 7/8/2019



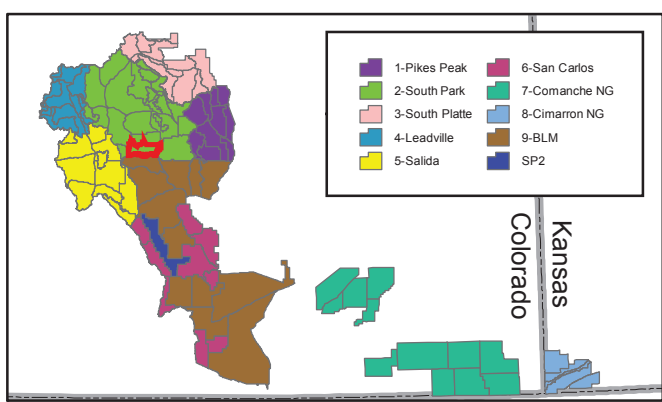
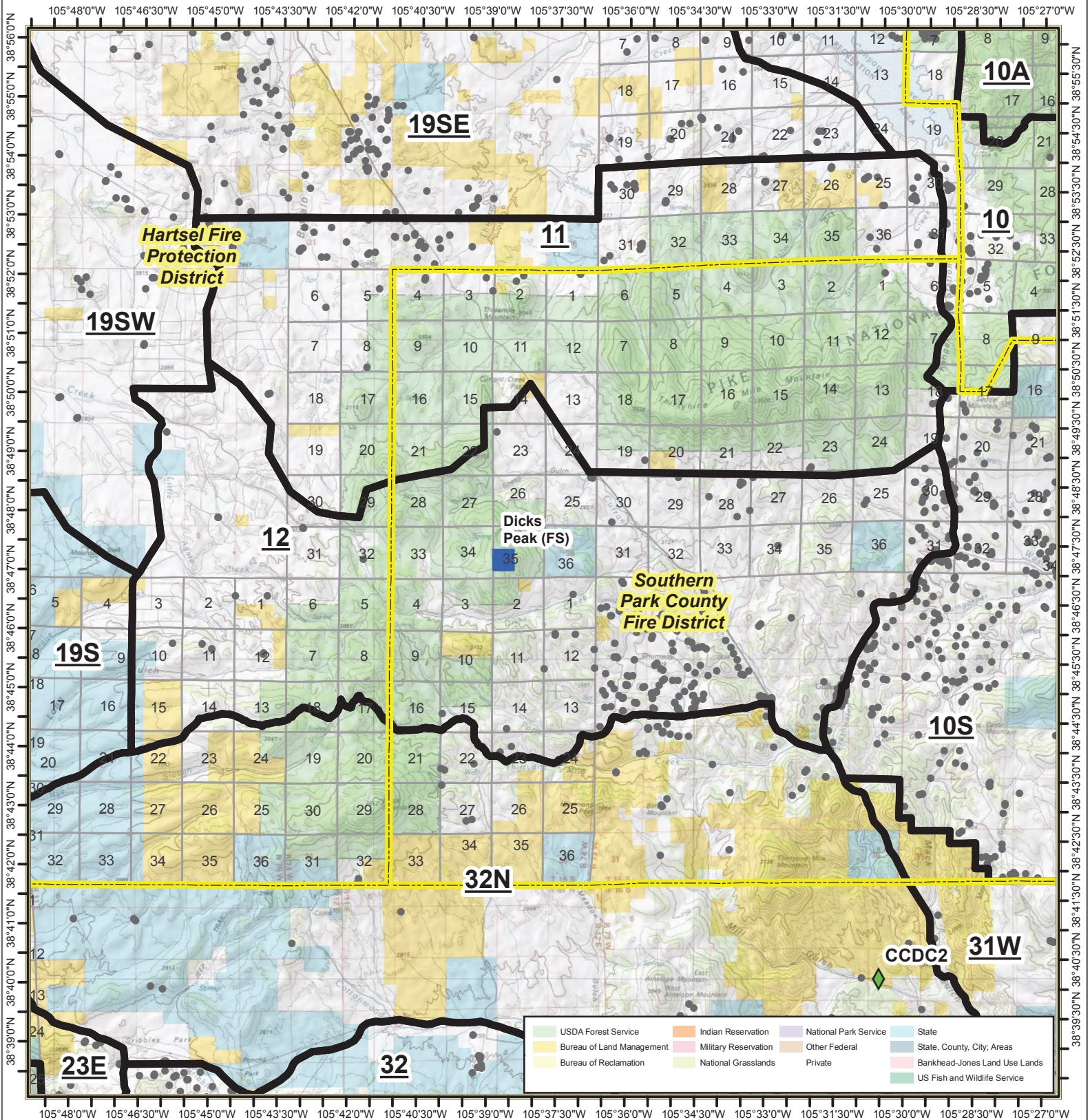
11-Thirtynine Mile Mountain

Page 16 of 101

- Structures
- Base-DIRECT
- Repeater
- Response Areas
- ◆ RAWS Stations
- Fire Protection Districts



Date: 7/8/2019



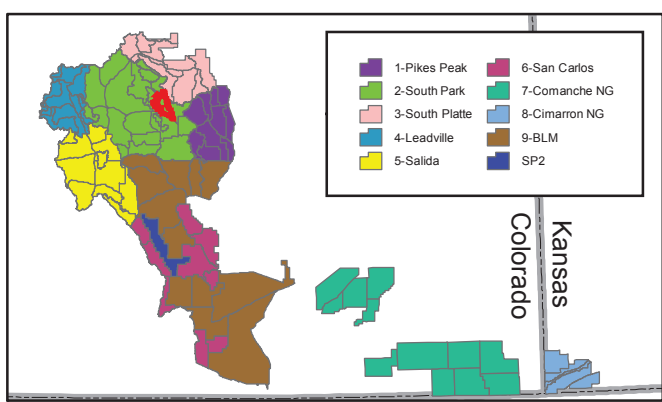
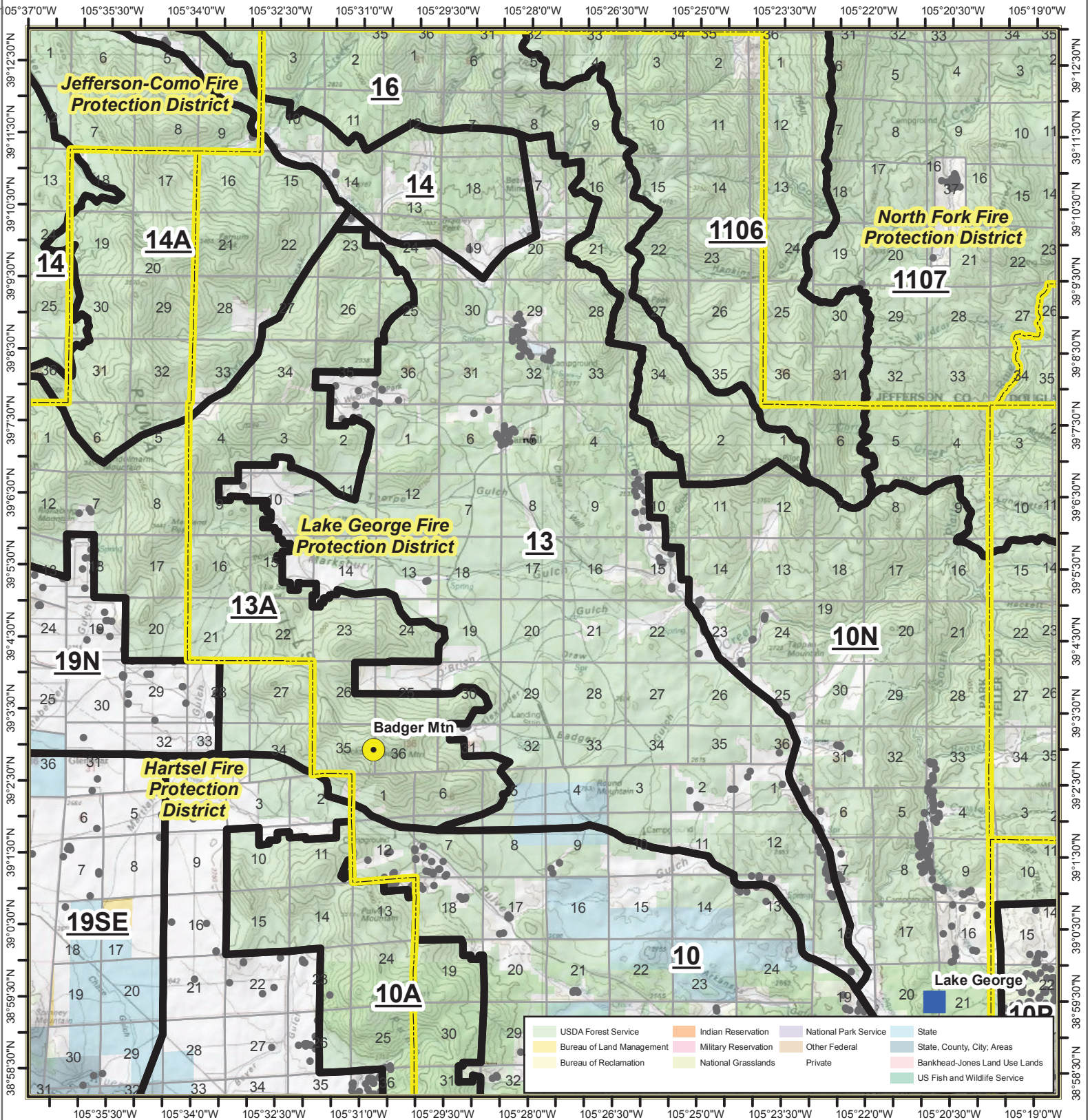
12-Dicks Peak

Page 17 of 101

- Structures
- Base-DIRECT
- Repeater
- Response Areas
- ◆ RAWS Stations
- Fire Protection Districts



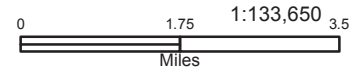
Date: 7/8/2019



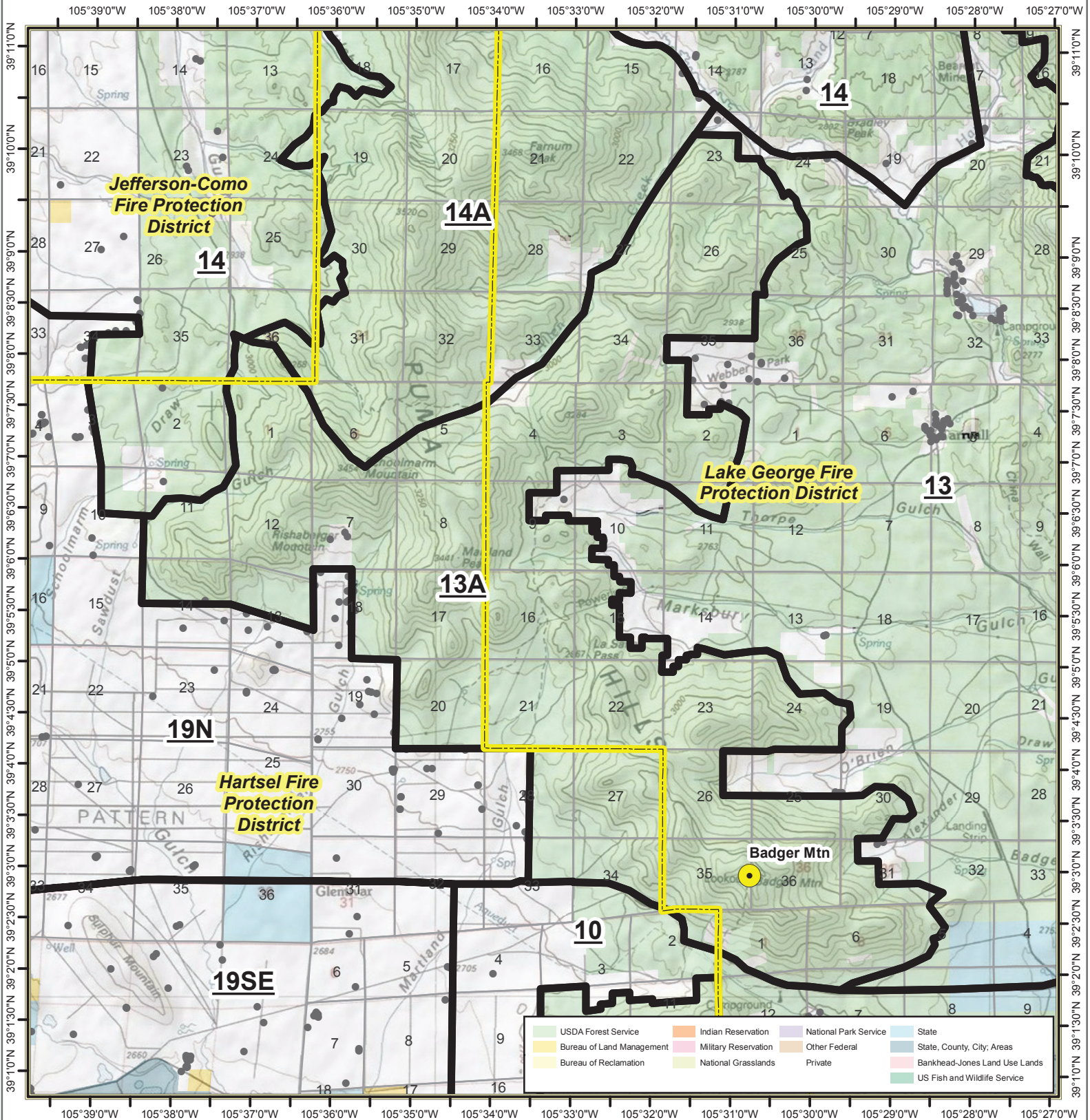
13-Badger Flats

Page 18 of 101

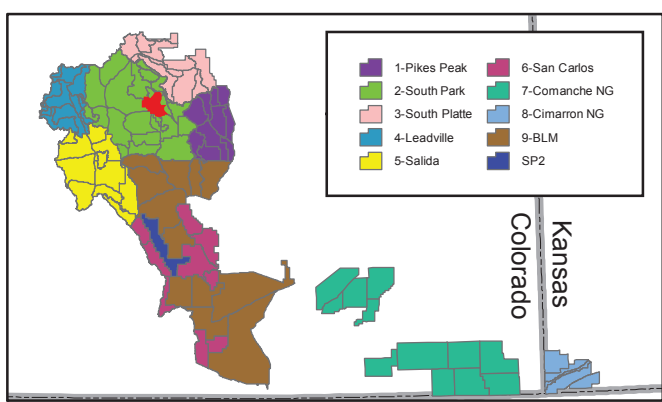
- Structures
- Base-DIRECT
- Repeater
- Response Areas
- RAWS Stations
- Fire Protection Districts



Date: 7/8/2019



USDA Forest Service	Indian Reservation	National Park Service	State
Bureau of Land Management	Military Reservation	Other Federal	State, County, City, Areas
Bureau of Reclamation	National Grasslands	Private	Bankhead-Jones Land Use Lands
			US Fish and Wildlife Service



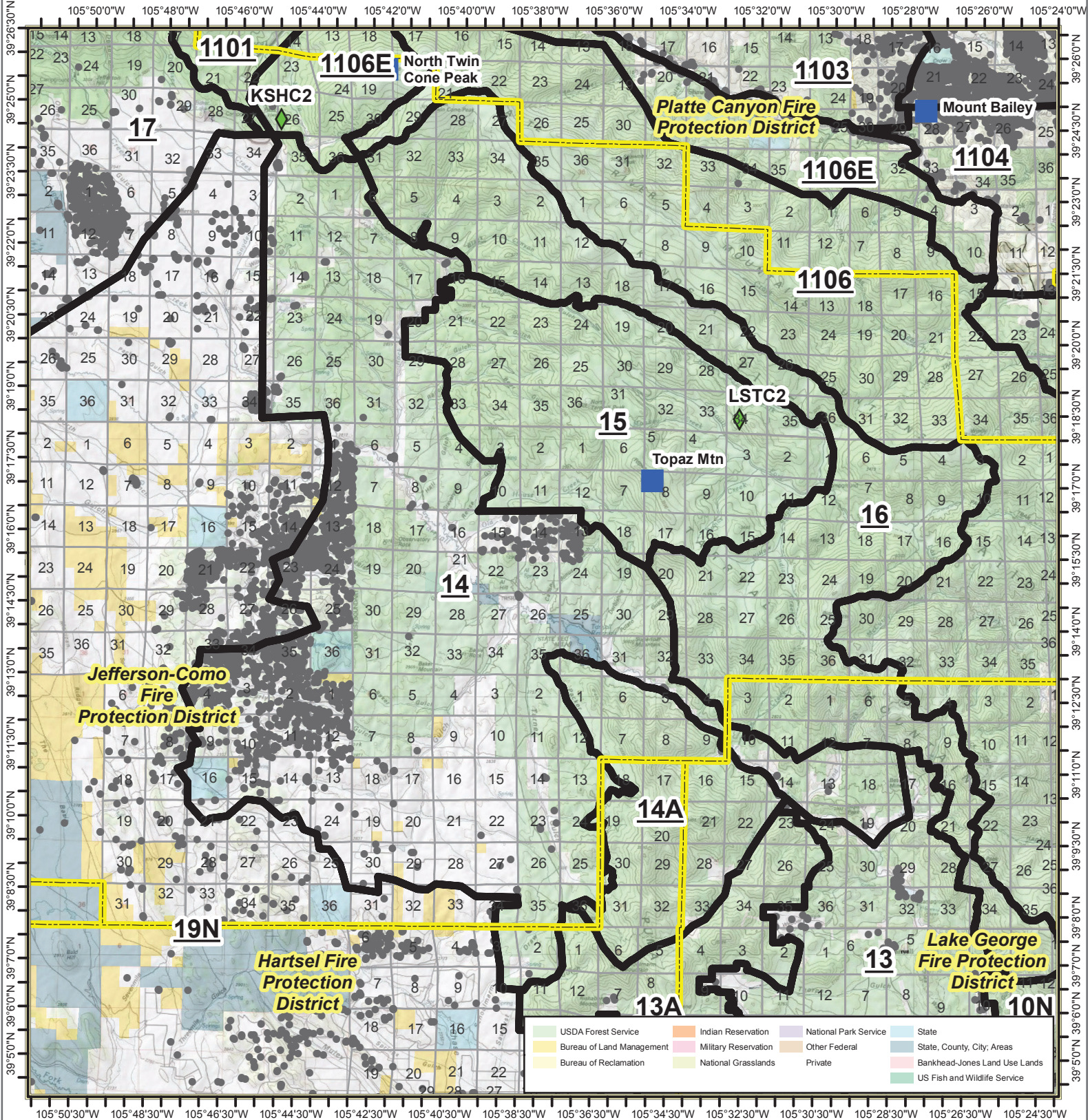
13A-Puma Hills

Page 19 of 101

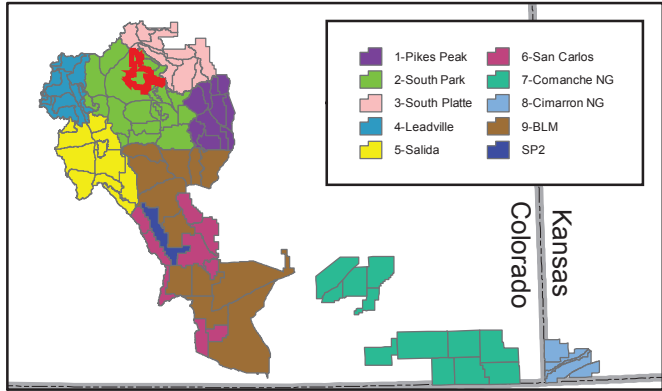
- Structures
- Base-DIRECT
- Repeater
- Response Areas
- ◆ RAWS Stations
- Fire Protection Districts



Date: 7/8/2019



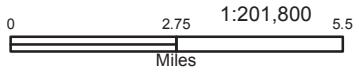
USDA Forest Service	Indian Reservation	National Park Service	State
Bureau of Land Management	Military Reservation	Other Federal	State, County, City, Areas
Bureau of Reclamation	National Grasslands	Private	Bankhead-Jones Land Use Lands
			US Fish and Wildlife Service



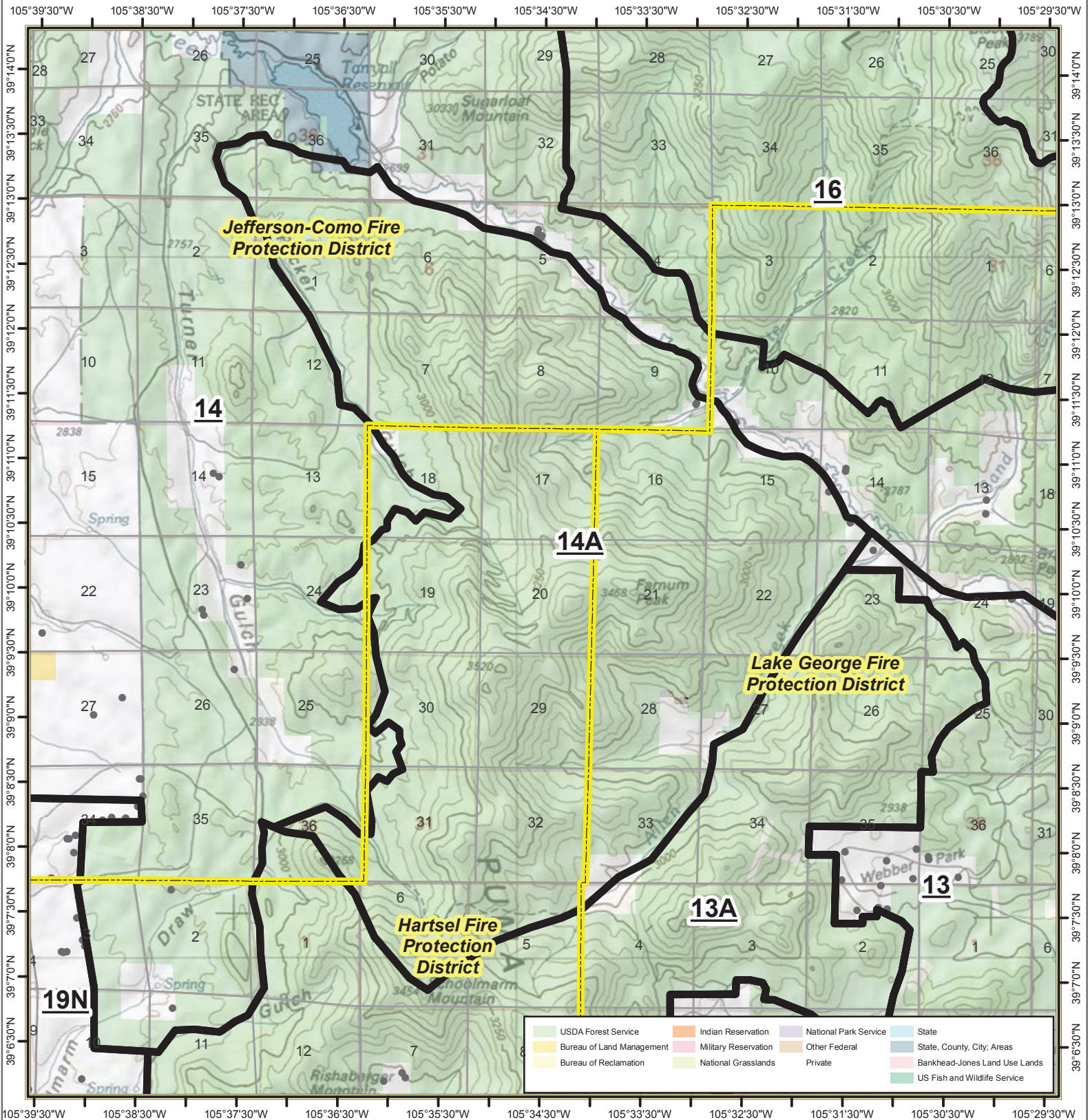
14-Northern Tarryall

Page 20 of 101

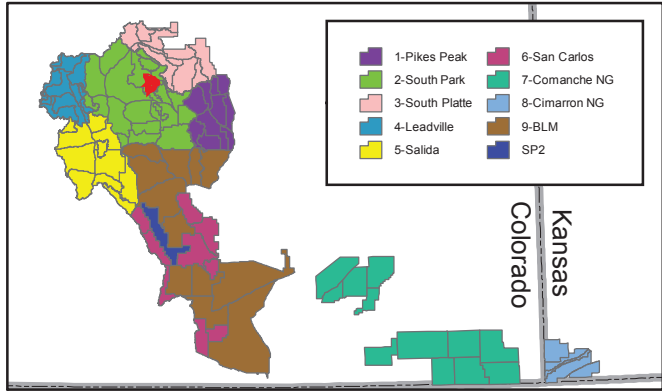
- Structures
- Base-DIRECT
- Repeater
- Response Areas
- RAWs Stations
- Fire Protection Districts



Date: 7/8/2019



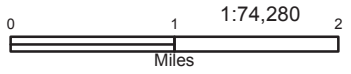
USDA Forest Service	Indian Reservation	National Park Service	State
Bureau of Land Management	Military Reservation	Other Federal	State, County, City, Areas
Bureau of Reclamation	National Grasslands	Private	Bankhead-Jones Land Use Lands
			US Fish and Wildlife Service



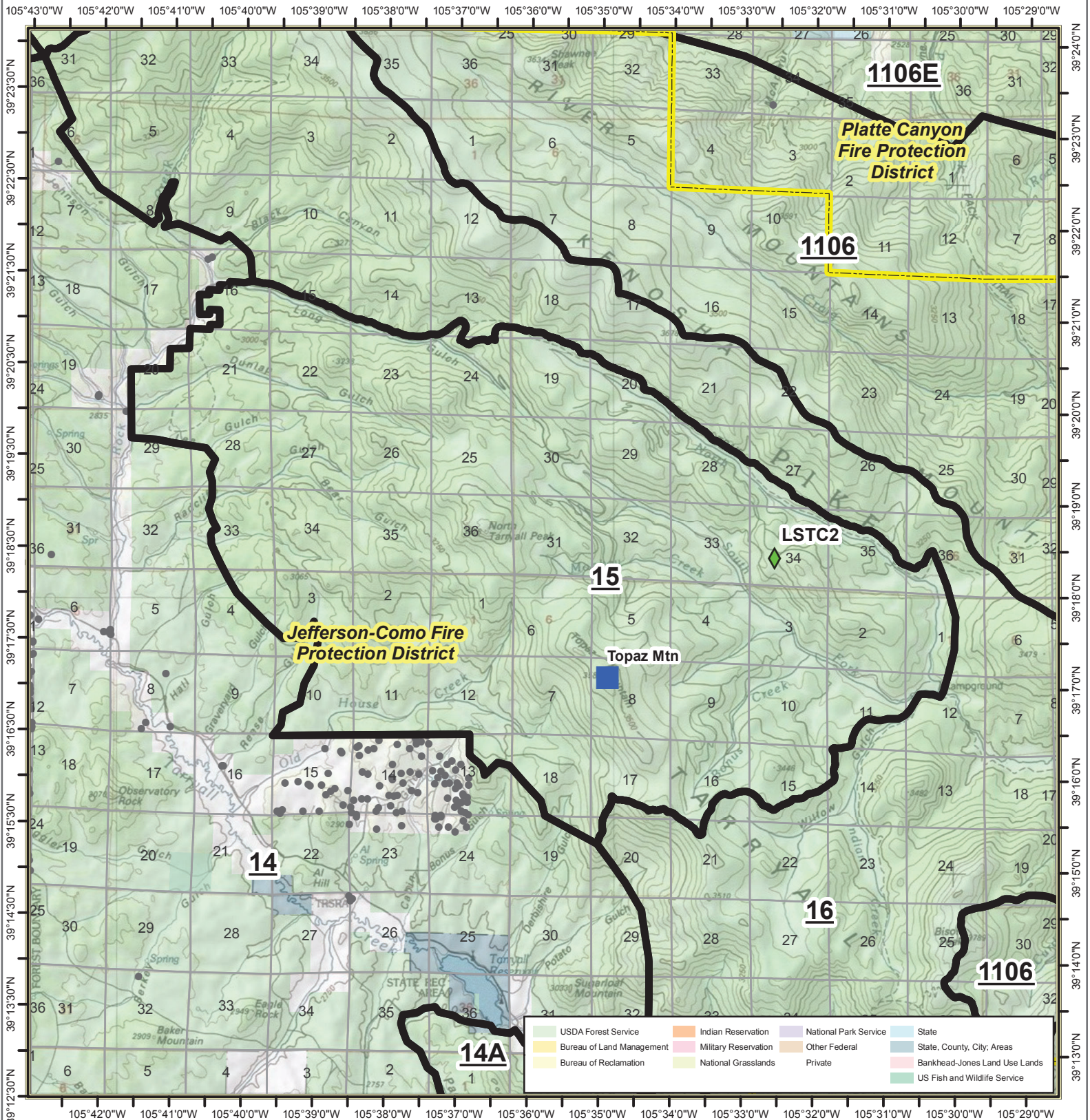
14A-Farnum Peak

Page 21 of 101

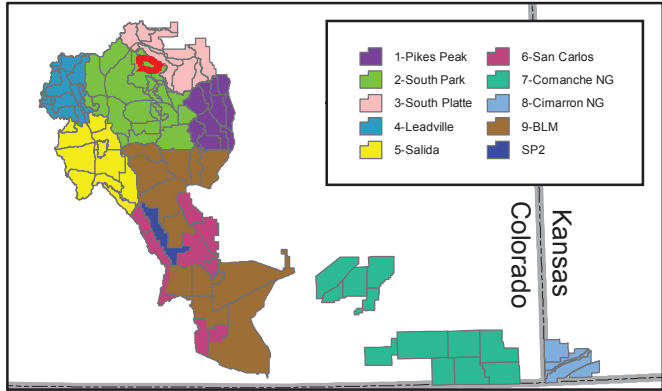
- Structures
- Base-DIRECT
- Repeater
- Response Areas
- RAWs Stations
- Fire Protection Districts



Date: 7/8/2019



USDA Forest Service	Indian Reservation	National Park Service	State
Bureau of Land Management	Military Reservation	Other Federal	State, County, City, Areas
Bureau of Reclamation	National Grasslands	Private	Bankhead-Jones Land Use Lands
			US Fish and Wildlife Service



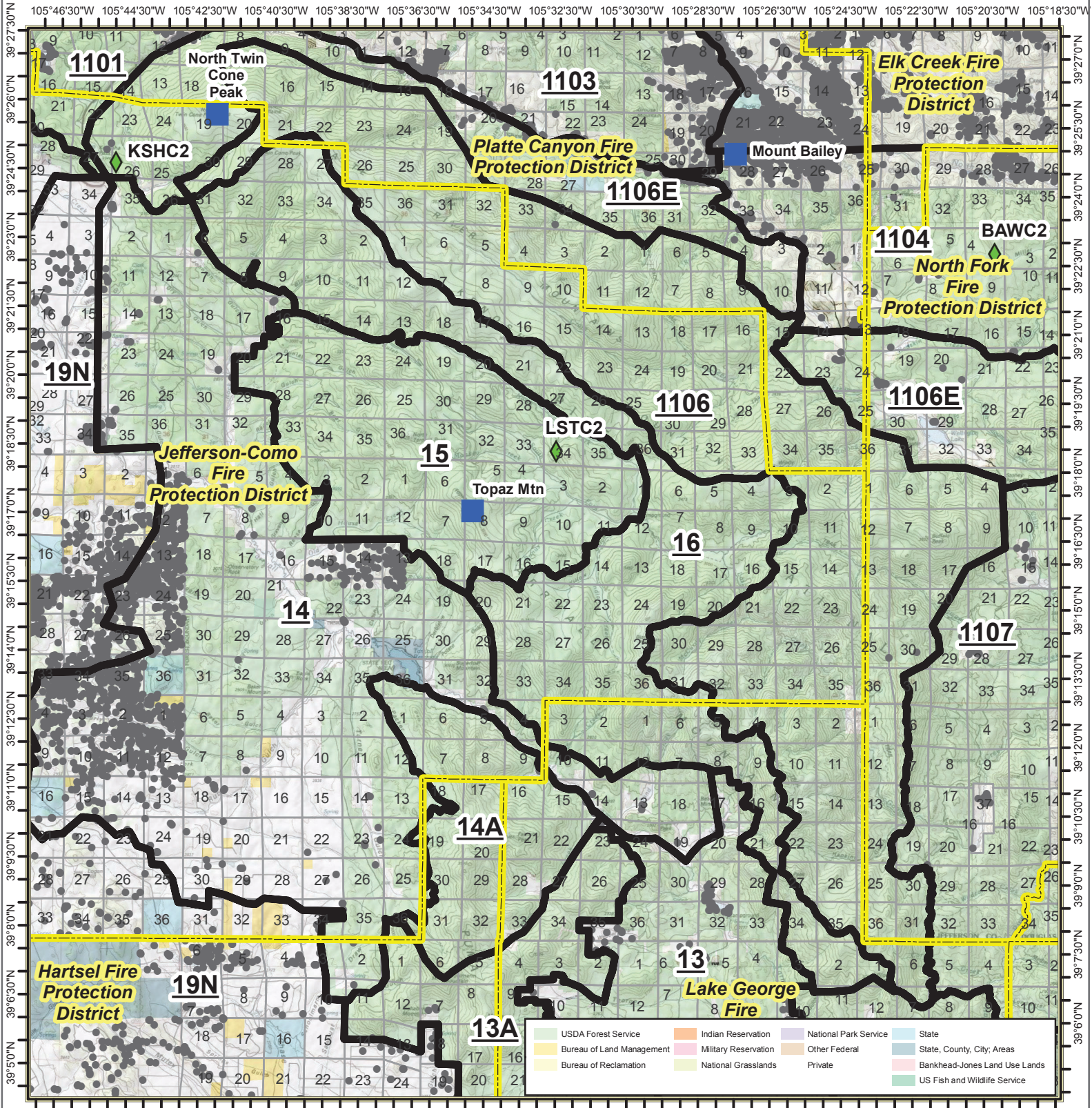
15-Topaz Mountain

Page 22 of 101

- Structures
- Base-DIRECT
- Repeater
- Response Areas
- ◆ RAWS Stations
- Fire Protection Districts



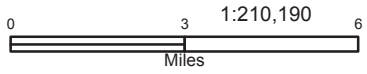
Date: 7/8/2019



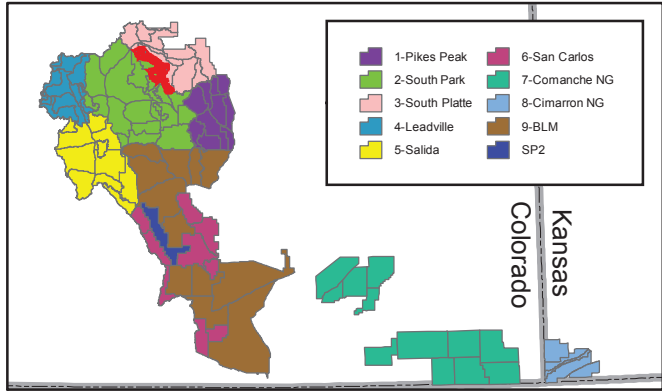
16-SPK Lost Creek Wilderness West

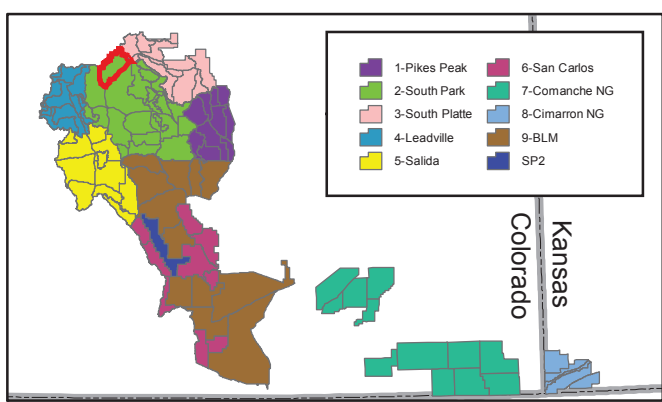
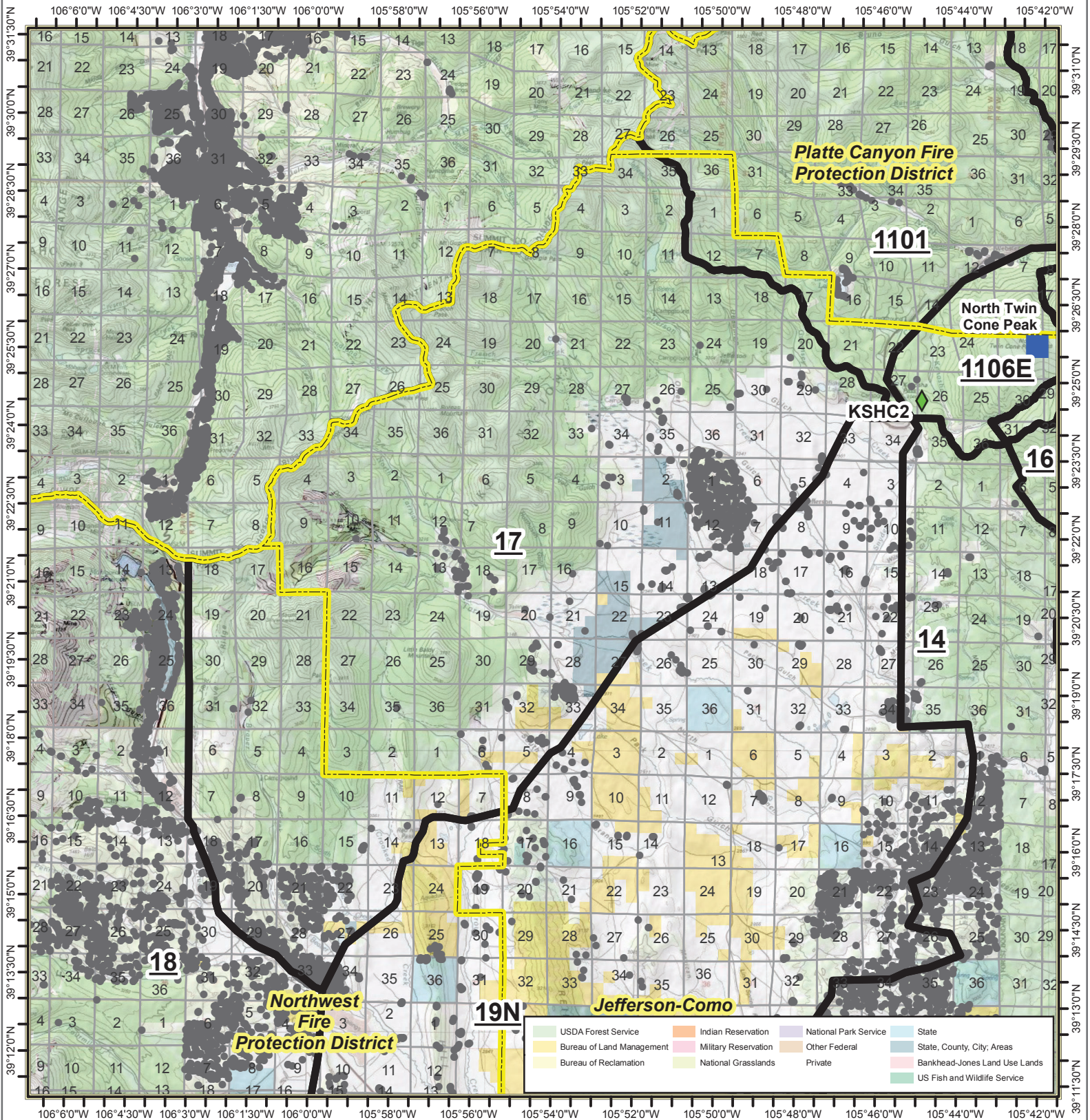
Page 23 of 101

- Structures
- Base-DIRECT
- Repeater
- Response Areas
- RAWs Stations
- Fire Protection Districts



Date: 7/8/2019

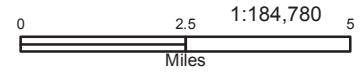




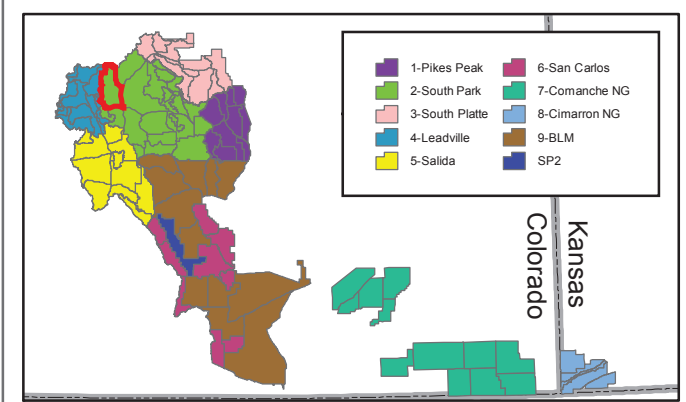
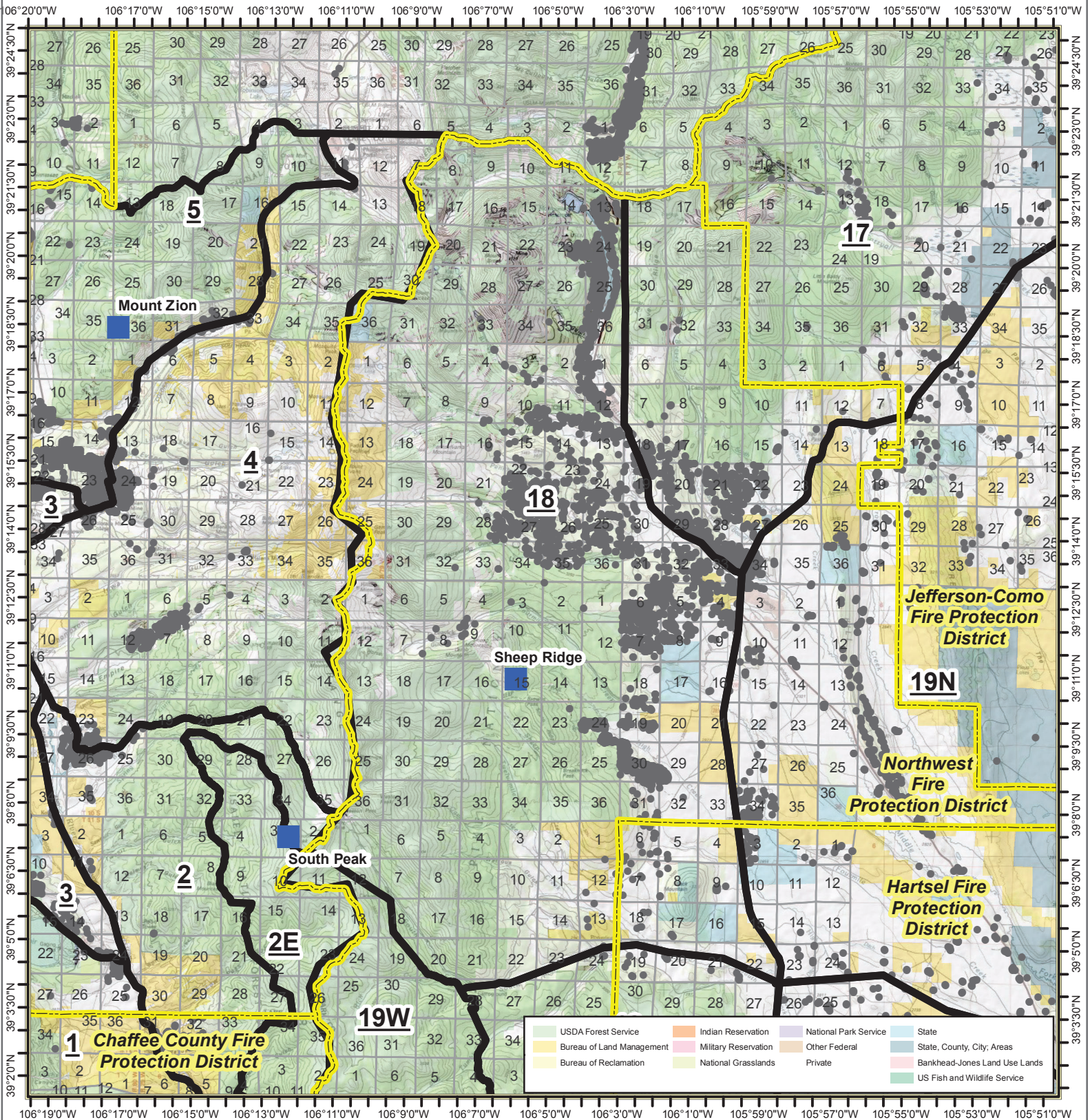
17-Georgia Pass

Page 24 of 101

- Structures
- Base-DIRECT
- Repeater
- Response Areas
- ◆ RAWS Stations
- Fire Protection Districts



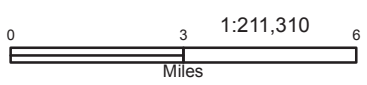
Date: 7/8/2019



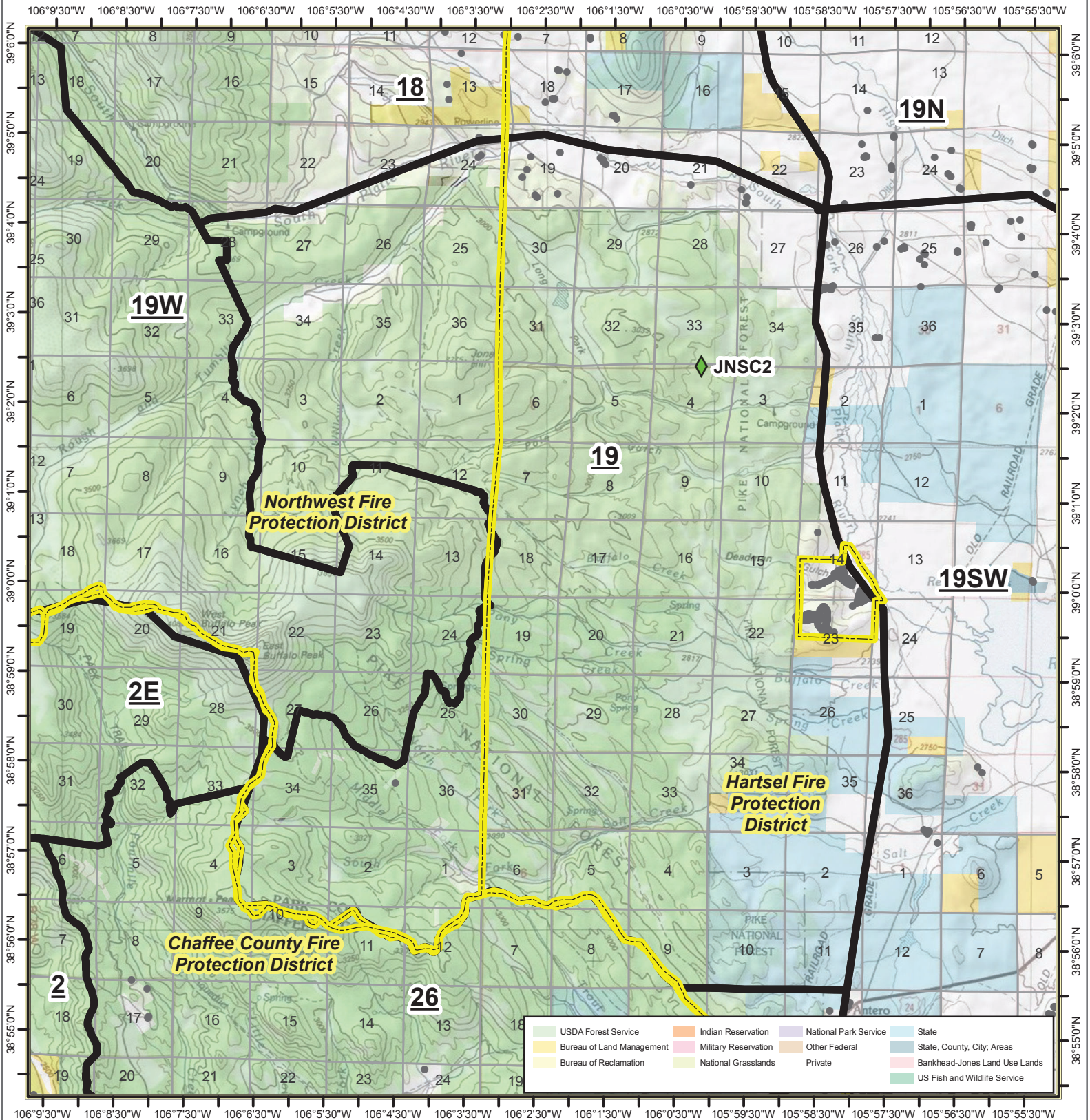
18-Sacramento

Page 25 of 101

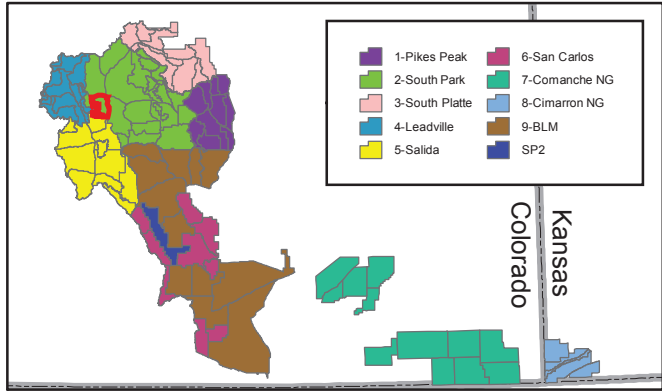
- Structures
- Base-DIRECT
- Repeater
- Response Areas
- RAWs Stations
- Fire Protection Districts



Date: 7/8/2019



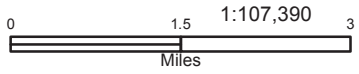
USDA Forest Service	Indian Reservation	National Park Service	State
Bureau of Land Management	Military Reservation	Other Federal	State, County, City, Areas
Bureau of Reclamation	National Grasslands	Private	Bankhead-Jones Land Use Lands
			US Fish and Wildlife Service



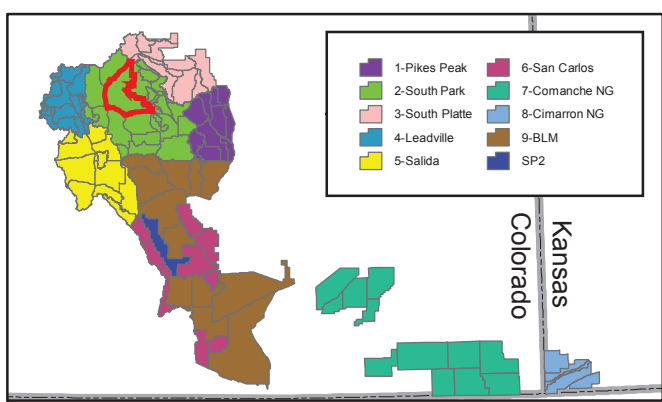
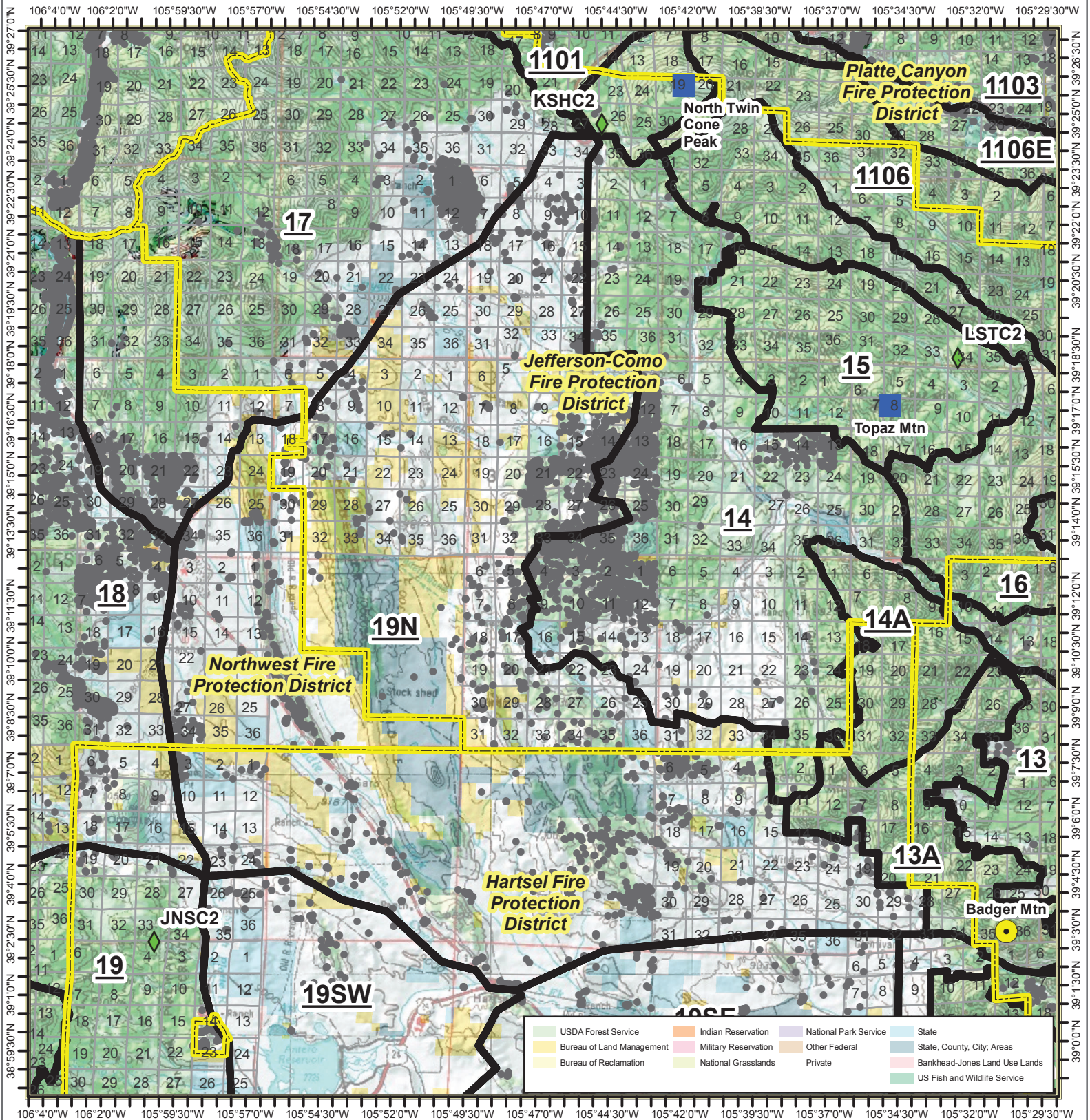
19-Jones Hill

Page 26 of 101

- Structures
- Base-DIRECT
- Repeater
- Response Areas
- ◆ RAWS Stations
- Fire Protection Districts



Date: 7/8/2019



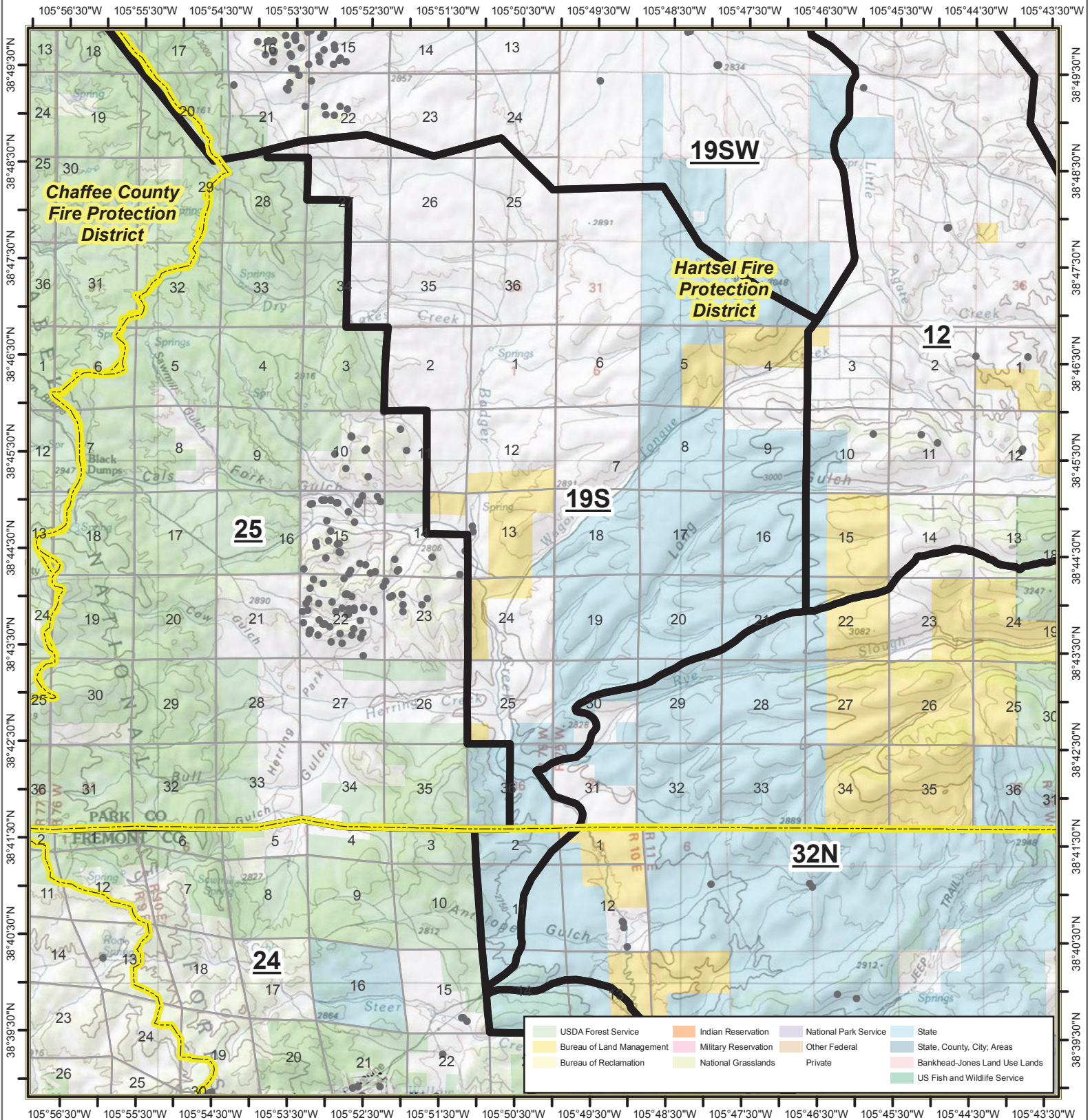
19N-Reinecker Ridge

Page 27 of 101

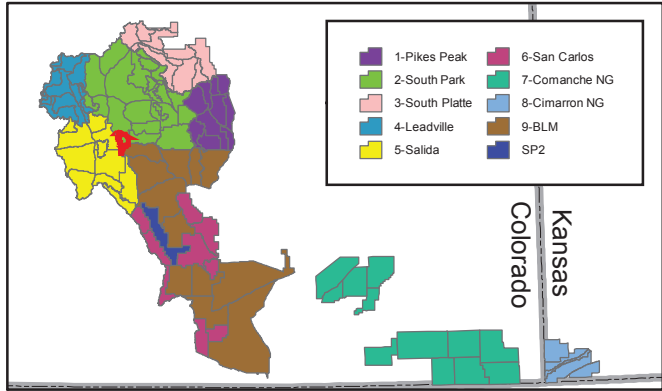
- Structures
- Base-DIRECT
- Repeater
- Response Areas
- RAWS Stations
- Fire Protection Districts



Date: 7/8/2019



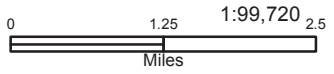
USDA Forest Service	Indian Reservation	National Park Service	State
Bureau of Land Management	Military Reservation	Other Federal	State, County, City, Areas
Bureau of Reclamation	National Grasslands	Private	Bankhead-Jones Land Use Lands
			US Fish and Wildlife Service



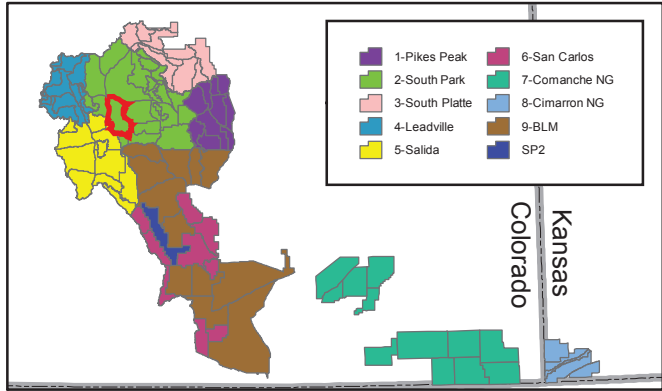
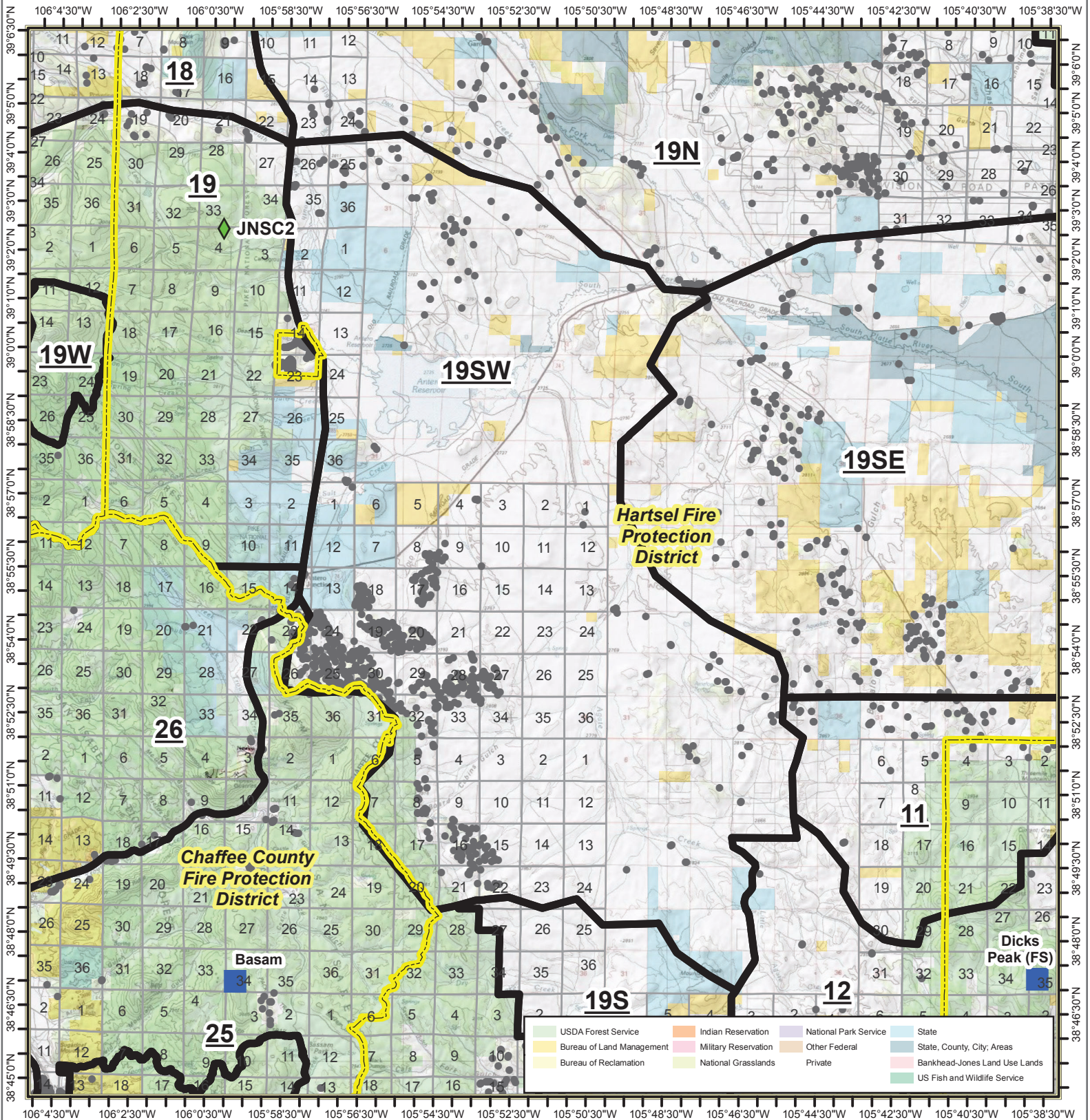
19S-S Highway 9

Page 28 of 101

- Structures
- Base-DIRECT
- Repeater
- Response Areas
- ◆ RAWS Stations
- Fire Protection Districts



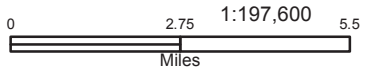
Date: 7/8/2019



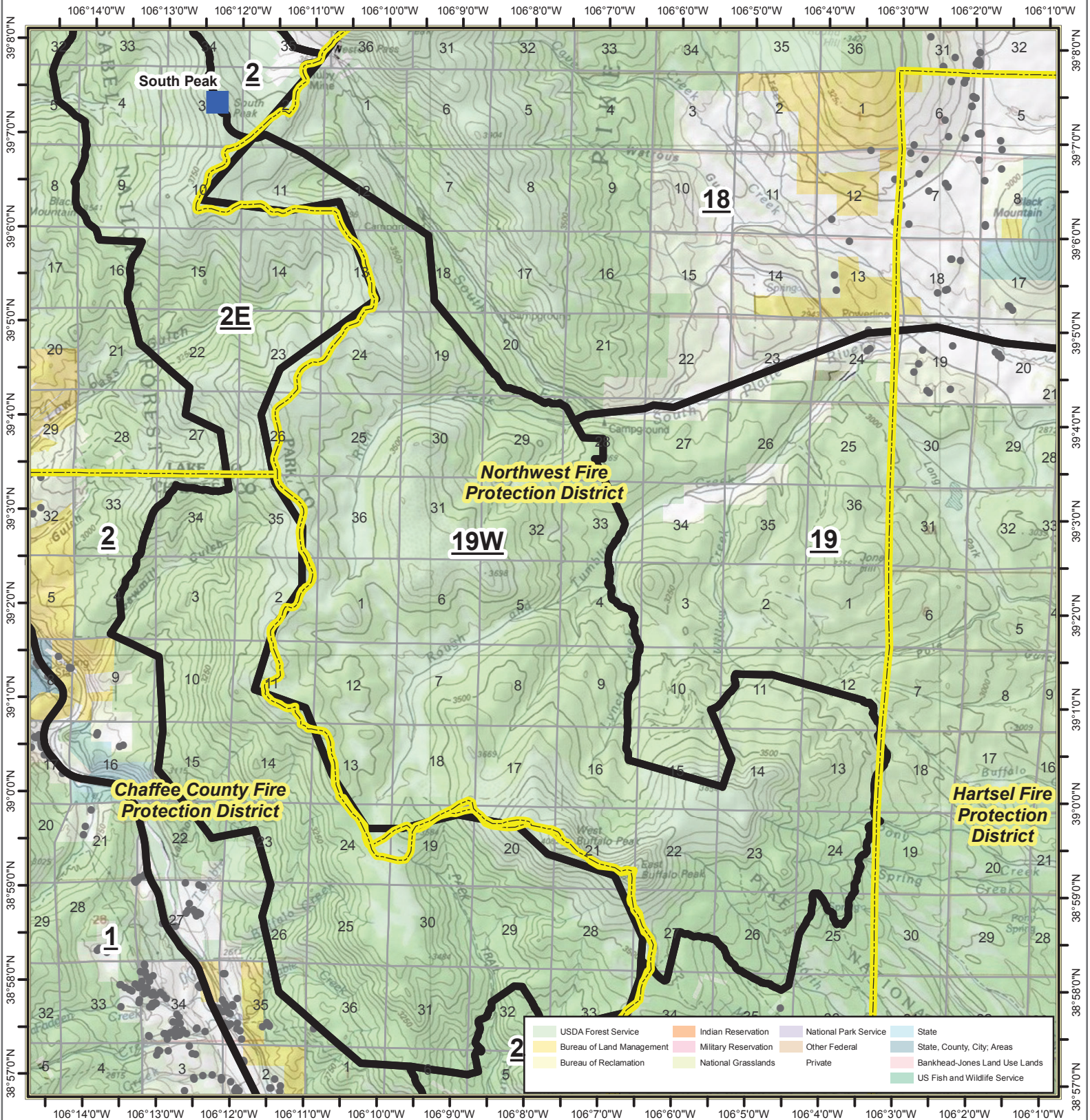
19SW-Antero

Page 30 of 101

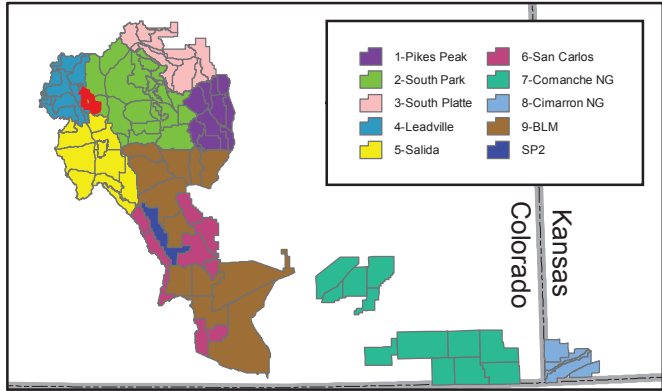
- Structures
- Base-DIRECT
- Repeater
- Response Areas
- ◆ RAWS Stations
- Fire Protection Districts



Date: 7/8/2019



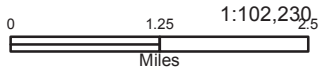
USDA Forest Service	Indian Reservation	National Park Service	State
Bureau of Land Management	Military Reservation	Other Federal	State, County, City, Areas
Bureau of Reclamation	National Grasslands	Private	Bankhead-Jones Land Use Lands
			US Fish and Wildlife Service



19W-SPK Buffalo Peaks Wilderness

Page 31 of 101

- Structures
- Base-DIRECT
- Repeater
- Response Areas
- ◆ RAWS Stations
- Fire Protection Districts



Date: 7/8/2019